

Original Research Articles

mtCO1-based population structure and genetic diversity of Pacific oyster *Crassostrea gigas* populations acquired from two farms in South Korea

Thanh T. Biet¹, Su-Jin Park¹, Hong-Keun Park², Dongjin Park³, Youn-Hee Choi⁴

¹ Department of Fisheries Biology, Pukyong National University, Busan 48513, South Korea, ² Department of Science, Trine University, Angola, IN, USA, ³ Department of Food Science and Technology, University of Nebraska-Lincoln, Lincoln NE, USA, ⁴ Major in Aquaculture and Applied Life Sciences, Division of Fisheries Life Sciences, Pukyong National University, Busan 48513, South Korea

Keywords: aquaculture, genetic diversity, *Crassostrea gigas*, mitochondrial COI

<https://doi.org/10.46989/001c.87672>

Israeli Journal of Aquaculture - Bamidgheh

Vol. 75, Issue 2, 2023

Since the early 1990s in South Korea, climatic and anthropogenic factors have incurred the reduction of the wild seeds of the Pacific oyster, *Crassostrea gigas*, which raised concerns about losing genetic diversity and accelerating genetic deterioration. We assessed the genetic diversity of *C. gigas* populations from two farms (Tongyeong and Gadeokdo) on the southern coast, where about 80% of the cultivated oysters in Korea are produced. Tongyeong showed slightly higher diversity than Gadeokdo, but both populations had a similar genetic structure characterized by low nucleotide diversity. Comparative haplotype analyses provided data supporting genetic features of the populations that include (1) weak genotype-locality relationship, (2) low levels of gene flow between populations, and (3) possible seasonal fluctuation of genetic variation within a population. Furthermore, the highly alike haplotype network patterns were observed between the wild and farm populations as well as among the populations in neighboring countries, which suggests that the genetic structure is conserved between wild and hatchery populations, and geographic proximity has minimal influence on the genetic composition.

INTRODUCTION

The Pacific oyster, *Crassostrea gigas* (*Magallana gigas*), is a seasonal delicacy beloved all over the world and has become one of the globally important aquaculture species.¹ It is also reputable for its high nutritional quality and health benefits; therefore, it has been dubbed “Milk of Sea” (USDA 2018). Since the new suspended culture techniques with longlines and rafts had been employed in Korea in the 1960s, the nationwide yearly production of *C. Gigas* dramatically increased and came to the point where it exceeded 300,000 metric tons, making the country the second-largest producer in the world as of 2019.^{2,3} During which Korea’s oyster industry also faced a significant reduction in natural seed production occurred by the climatic change and the country’s rapid industrialization throughout the time.⁴ Subsequently, many seeds got imported from other countries, such as Japan and the United States, to replenish the drastic shortage of seeds, and afterwards they blended into the wild populations.^{4,5} In 2007, the 10,900

tons of crude oil released from the tanker MV Hebei Spirit, covered 375km of the shoreline of the western coast of Korea.⁶ The toxicity of the oil wiped out most oysters at more than 90% of the oyster farms in that region, triggering the displacement of the natural spats by the ones from southern areas.⁷ In consequence, this accident and the climatic and anthropogenic interference further depleted the wild stock on the West Coast and predictably impacted the diversity.

Mitochondrial DNA (mtDNA) analysis is one of the commonly adopted approaches to examine divergences in animals by its small size, maternal and non-recombining mode of inheritance, rapid evolution, extensive intraspecific polymorphisms, etc.⁸ Among mtDNA markers, cytochrome oxidase c subunit I (mtCOI) is an eminently conserved protein-encoding gene in the mitochondrial genome.⁹ The effectiveness of mtCOI analysis in studying genetic diversity and genetic structure of marine mollusk populations has been charted in blood cockle, estuarine clam, and hard clam.¹⁰⁻¹² In Korea, although a few studies have examined the genetic diversity of *C. gigas* using molecular-based

a Corresponding author. e-mail: parkh@trine.edu (HK Park)

b Corresponding author. e-mail: unichoi@pknu.ac.kr (YH Choi)

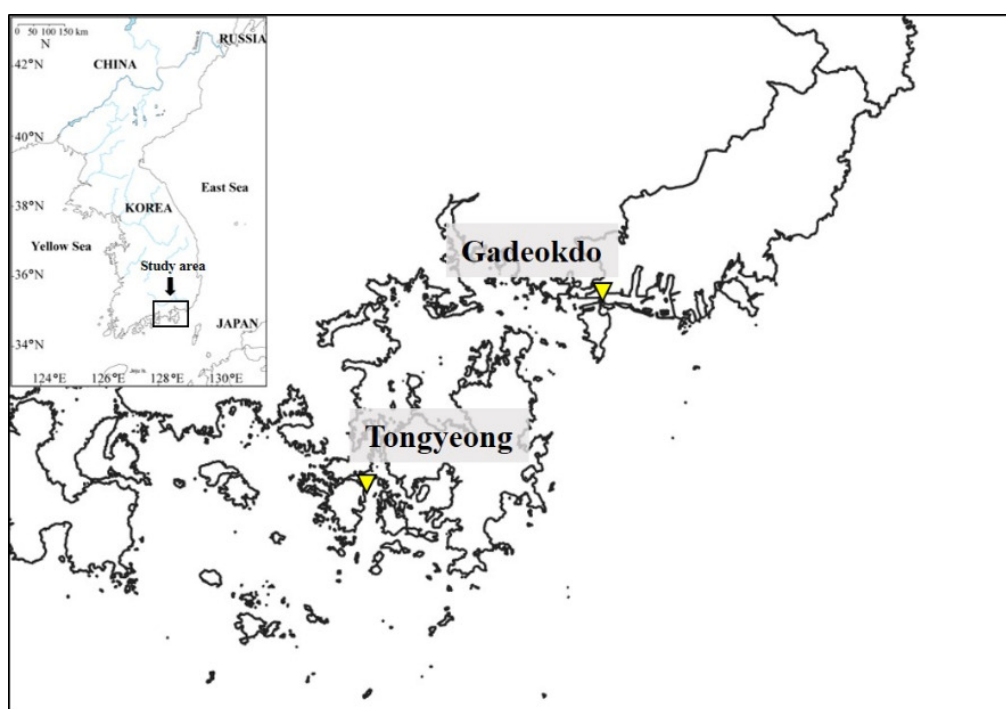


Figure 1. Pacific oyster, *C. gigas*, sampling sites in Tongyeong (TY) and Gadeokdo (GD), South Korea.

methods,^{13,14} our understanding of the current genetic structure and diversity is still insufficient, given the above chronologically deteriorating circumstances and the economic value of this species.

As a preliminary work for full-on research on the populations throughout the Korean peninsula, the present study investigated the mtCOI gene to understand better the genetic variation and population structure of *C. gigas* from Tongyeong and Gadeokdo in the southern coast, where about 80% of the cultivated oysters in Korea are produced.^{15,16}

MATERIALS AND METHODS

SAMPLE COLLECTION

Forty oysters each were obtained from aquaculture farms in Tongyeong (TY, 34°52'38.4"N 128°14'40.8"E) and Gadeokdo (GD, 35°04'19.0"N 128°50'28.6"E) with ten collected at each site in October 2020 and January, April, and July 2021 (Figure 1). They were immediately transferred on ice to the Laboratory of Physiology, Pukyong National University, Busan, Korea. Their fresh mantle edges were dissected and stored in 100% ethanol at room temperature until DNA isolation.

DNA EXTRACTION

The excised samples were incubated with 600 µL of TNES-urea buffer (10 mM Tris-HCl, pH 8.0; 125 mM NaCl; 10 mM EDTA, pH 8.0; 0.5% SDS; 6 M urea) and 10 µL proteinase K (20 µg/mL) at 60°C for at least 12 h, and total genomic DNA (gDNA) was extracted using the phenol/chloroform method.¹⁷ The extracted gDNA was dried at room temperature, resuspended in TE buffer (10mM Tris-HCl; 1

mM EDTA, pH 8.0), and stored at -20°C for later use. Its quantity and quality were checked using a spectrophotometer (DS-11; DeNovix, DE, Wilmington, USA).

PRIMER DESIGN

To design a pair of primers for polymerase chain reaction (PCR), we retrieved mtCOI sequences from GenBank (<https://www.ncbi.nlm.nih.gov/>) and aligned them using ClustalW in BioEdit 7.2.¹⁸ After comparing the aligned nucleotide matrix, conserved regions of the *Magallana* sequences were selected as forward and reverse primers. Their melting temperatures and secondary structures were checked with the web service Sequence Manipulation Suite¹⁹ before oligonucleotide synthesis.

PCR AMPLIFICATION AND SEQUENCING

PCR was conducted in a 20-µL reaction using *AccuPower*® PCR PreMix (Bioneer, Daejeon, South Korea) with 0.2 µM of the forward [CRA-MT-18171f (5'-TTTCGCACTGGGCAGGTAT-3')] and reverse [CRA-MT-1865r (5'-ATTTGCACTGGGCAGGTAT-3')] primers and 1 µL of gDNA template (20 ng/µL). The DNA was amplified using the ProFlex PCR System (Thermo Fisher Scientific, Waltham, MA, USA) at 95°C for 5 min, followed by 35 cycles at 95°C for 30 s, 55°C for 30 s, and 72°C for 2 min, with a 5-min final extension at 72°C. The PCR product was electrophoresed in 1.5% agarose gel stained with ChamelGreen™ I (SFC Probes, South Korea) followed by gel purification with an *AccuPrep*® PCR Purification Kit (Bioneer, Daejeon, South Korea). The purified DNA was subsequently sequenced at MacroGen (Seoul, South Korea).

Table 1. mtCOI sequences of various *C. gigas* populations

No.	Haplotype locality	mtCOI NCBI accession number	References
	China	KP099007, KP099008, KP099009, KP099010, KP099011, KP099012, KP099013, KP099017, KP099024, KP099029, KP099030, KP099031, KP099032, KP099033, KP099034, KP099044, KP099050, KP099051, KP099052, KP099038, KP099039, KP099040, KP099041, KP099043, KP099019, KP099021, KP099022, KP099023, KP099015, KP099016, KP099018, KP099045, KP099046, KP099047, KP099048, KP099014, KP099049	Li et al. ²⁰
2	Incheon, Korea	KP099020, KP099025, KP099026, KP099027, KP099028	Li et al. ²⁰
3	Suncheon Bay, Korea	KP099042	Li et al. ²⁰
		AB641329, AB641330, AB641331, AB641332, AB641333, AB641334	Hong et al., 2011 ²¹
4	Saiki, Japan	KP099035, KP099036, KP099037	Li et al. ²⁰
	Matsushima Bay, Japan	AB736493, AB736494, AB736495, AB736496, AB736497, AB736498, AB736499	Sekino et al., 2012 ²²
5	Canada	KF643857, KF643604, KF643519	Layton et al., 2014 ²³
6	Taiwan	KX345121, KX345122, KX345123, KX345124, KX345125, KX345126, KX345127, KX345128	Hsiao, 2016 ²⁴
7	Brazil	KX436124, KX436125, KX436126, KX436127, KX436128, KX436129, KX436130, KX436131	Moreira et al., 2016 ²⁵
8	Mexico	KT317429, KT317430, KT317431, KT317432, KT317433, KT317434, KT317435, KT317436	Raith et al., 2016 ²⁶
9	Netherlands	DQ659367, DQ659368, DQ659369, DQ659371	Cardoso et al. (unpublished)
10	United States	MT219482, MT219483, MT219484, MT219485, MT219486, MT219487, MT219488	Sutton et al., 2020 ²⁷

DATA ANALYSIS

The raw sequence data were imported to Sequencer v. 5.4.5 (Gene Codes, Ann Arbor, MI, USA) to check the base manually calls on the chromatograms. Using the Clustal W function in BioEdit 7.2.5, we aligned all sequences with the default parameters. After the manual correction of obvious misalignments, a nucleotide sequence matrix of 863-bp mtCOI fragments from the 80 *C. gigas* specimens from TY and GD was generated. DnaSP v. 6²⁸ was employed to estimate the total number of haplotypes (H) and haplotype distribution among populations. The haplotype diversity (h), nucleotide diversity (π), and mean number of pairwise differences (k) were calculated using ARLEQUIN v. 3.5.²⁹

A parsimony network was generated and plotted with TCS analysis³⁰ using PopART v. 1.7³¹ to evaluate the genealogical relationship of all *C. gigas* haplotypes. The network was constructed from 80 sequences from the TY and GD populations, alongside 117 sequences from various countries, which had been examined in the previously published studies (Table 1).

The genetic structure of the *C. gigas* populations from the TY and GD was assessed by analysis of molecular variance (AMOVA) on ARLEQUIN v. 3.5. The fixation index (FST) value ranges from 0 (no differentiation between sub-

populations) to 1 (complete differentiation of populations).³² The significance of each pairwise comparison was tested with 10,000 random replicates.

RESULTS

AMPLIFICATION OF MTCOI GENE FROM A CHRONOLOGICAL SET OF *C. GIGAS*

Eighty *C. gigas* samples collected from aquaculture farms in Tongyeong (TY) and Gadeokdo (GD) over the 4 consecutive seasons (i.e., 10 TY and 10 GD samples per season) were used for this study. Initially, the mtCOI gene of each individual was amplified by PCR. All samples generated a single 2000-bp amplicon, indicating the presence of an intact mtCOI gene in each individual (Figure 2). Subsequent sequencing confirmed that all of the amplicons are mtCOI-specific (data not shown).

GENETIC DIVERSITY

To characterize the genetic diversity of *C. gigas* populations from TY and GD, multiple sequence analysis was performed using an 863-bp nucleotide sequence of the mtCOI from the

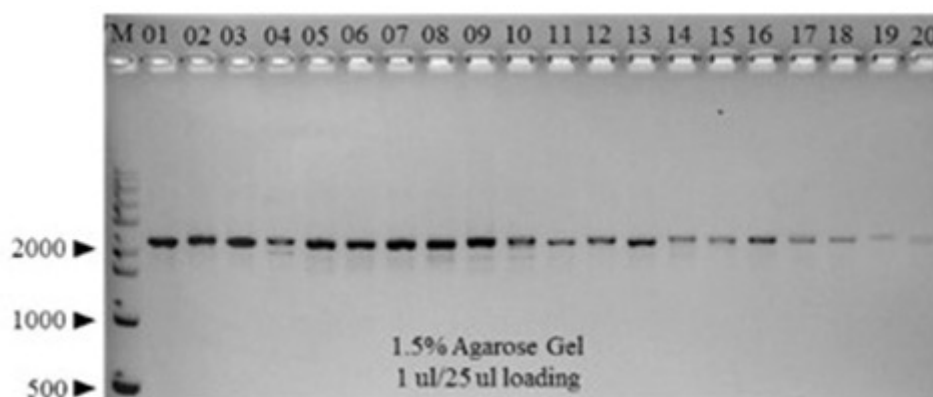


Figure 2. PCR amplification of mitochondrial *cytochrome c oxidase subunit 1* from *C. gigas* samples collected from TY (01 to 10) and GD (11 to 20) in Fall. The other seasons' amplification had the same band pattern. A pair of primers, CRA-MT-18171f and CRA-MT-1865r, were used to amplify a 2000-bp fragment that includes the gene. M, 1 kb size marker.

Table 2. Diversity indices of *C. gigas* from TY and GD.

Sampling sites	n	s	H	h ± SD	π	k
TY	40	16	13	0.5154 ± 0.0982	0.000927	0.80
GD	40	10	9	0.4397 ± 0.0983	0.000689	0.59
Mean				0.4760 ± 0.0710	0.00081	0.70

n, number of individuals sampled per site; s, number of polymorphic sites; H, number of haplotypes; h, haplotype diversity; π, nucleotide diversity; and k, mean number of pairwise differences.

80 samples. This analysis identified 27 different single nucleotide polymorphism (SNP) sites in total, consisting of 21 transitions (a/g, c/t) and 4 transversions (t/g), with no indels being detected. The translated amino acid sequences of the mtCOI fragments from the 80 *C. gigas* were 100% identical, indicating that the sequence variation of *C. gigas* mtCOI is predominantly due to synonymous substitutions (data not shown).

Based on the SNP profiles, a total of 22 haplotypes were determined: 13 in TY and 9 in GD (Table 2), which indicates that the genetic diversity is slightly greater in TY ($h=0.5154$) than GD ($h=0.4397$) during the study period (Table 2). Haplotype 1 (HAP_1) was the most abundant haplotype shared by 58 samples (28 in TY and 30 in GD), accounting for 72.5% of the total sample size. Other 20 haplotypes differed from HAP_1 by 1-3 nucleotides. As expected, TY and GD populations displayed low nucleotide diversity (0.000927 and 0.000689, respectively), with TY slightly more diverse (Table 2). Consistently, the haplotype diversity of TY was higher than that of GD. The mean number of pairwise differences (k) measuring the genetic diversity within a population was higher in TY than in GD (Table 2). Overall, TY and GD populations shared a similar genetic profile characterized by low genetic diversity with the predominant HAP_1 and diverse minor haplotypes.

POPULATION GENETIC STRUCTURE

AMOVA analysis was conducted to characterize the genetic structure of the 2 *C. gigas* populations. As shown in Table

3, most of the total molecular variance was present within populations (99.81%) rather than between the two populations. Accordingly, the fixation index (F_{ST}), a measure of population differentiation due to genetic structure, was 0.00188 but was not statistically significant (p -value = 0.49853).

CHARACTERIZATION OF HAPLOTYPES

To further delineate the genetic relationship of the two *C. gigas* populations, a haplotype network was constructed using the 863-bp mtCOI alignment matrix. As shown in Figure 3, HAP_1 formed a core of the network with other 20 satellite haplotypes. Except for HAP_19 and HAP_20, all satellite haplotypes were shown to be a singleton with a distinct SNP profile. All satellite haplotypes differ from HAP_1 by 1-3 nucleotides, resulting in the characteristic 'star-like' network pattern.

Next, 117 mtCOI sequences of 8 different country origins and two Korean origins (Incheon and Sucheon) were retrieved from the NCBI GenBank and included in the haplotype network analysis (Table 1). Li et al.²⁰ previously characterized 46 HAPs in the *C. gigas* population with 12 geographical origins in the northwestern Pacific. Selected mtCOI sequences representing 37 haplotypes, including HAP_1 (KP099007), out of the 46 HAPs were included in this analysis (see Table 1). Similar to Figure 3, the haploid network consisted of the dominant HAP_1 and the satellite HAPs. While a majority of satellite haplotypes was a singleton, 11 satellite haplotypes shared by different geographi-

Table 3. Analysis of molecular variance (AMOVA) among *C. gigas* mtCOI sequences

Source of variation	Degrees of freedom	Variance components	Percentage of variation
Among population	1	0.0006 Va	0.19
Within population	78	0.34872 Vb	99.81
Fixation index	$F_{ST} = 0.00188$	$p\text{-value} = 0.49853$	

cal origins were identified (Figure 4). Despite the geographical proximity, only 3 haplotypes (i.e., HAP_3, HAP_11, and HAP_14) were shared by Chinese and Korean *C. gigas* populations. No significant relationship was observed between the Korean origins (TY, GD, Incheon, and Sucheon).

DISCUSSION

A total of 21 haplotypes were identified in the two populations (TY and GD, hereafter) based on nucleotide sites within the mtCOI gene. The subsequent genealogical analysis showed that these haplotypes form a characteristic shallow network consisting of the major haplotype (i.e., Hap_1) at the center and 20 minor satellite haplotypes diverging from HAP_1 (Figure 3).

Genetic differences between the two populations were shown to lie in their distinctive satellite haplotypes; TY had 12 satellite haplotypes while GD had 8, but none of the satellite haplotypes were shared between the two. Each satellite haplotype differed from HAP_1 by 1-3 nucleotides and mostly formed a singleton, suggesting these satellite haplotypes have emerged recently. Previously, Li et al. reported a similar “star-like” network based on 228 mtCOI sequences of wild *C. gigas* collected from the coasts of China, Korea, and Japan.²⁰ Furthermore, HAP_1 accounted for more than 70% of both wild and cultured populations, suggesting the population genetic structure of *C. gigas* is conserved between wild and hatchery populations. The sharing of HAP_1 at equally high frequencies among the geographically diverse populations indicates that HAP_1 likely represents the ancestral spat oyster from Japan that has become prevalent worldwide since the early 20th century.¹ Weak genetic differentiation ($F_{ST} = 0.00188$) between TY and GD is, thus, more likely due to the history of monophyly and large-scale distribution associated with the current *C. gigas* industry, rather than distance-dependent genetic homogenization between the two populations.

C. gigas populations were further characterized by analyzing a haplotype network of 117 mtCOI sequences from 12 different geographic origins (Figure 4). This extended network consisted of the predominant HAP_1 and 56 satellite haplotypes, most of which were singleton. Only 3 satellite haplotypes (i.e., HAP_3, HAP_11, and HAP_14) were shared between analyzed Chinese and Korean *C. gigas* populations. This data could imply that geographic proximity might not exert much influence on the genetic makeup of *C. gigas* populations, which needs further investigations on a larger scale.

The loss of genetic diversity reduces the fitness and adaptability of a species and the size of its population, pos-

sibly increasing the risk of species extinction. The rapid decline of *C. gigas* populations in recent years necessitates systemic management to improve the sustainability of *C. gigas* populations. In the present study, both *C. gigas* populations (Tongyeong and Gadeokdo), located on the southern coast of Korea, were shown to possess low levels of genetic diversity, which is in parallel with the extant Pacific oyster *C. gigas* populations.^{14,20}

ACKNOWLEDGMENTS

The Basic Science Research Program supported this research through the National Research Foundation of Korea (NRF), funded by the Ministry of Education (NRF-2020R1F1A1074614).

AUTHORS' CONTRIBUTION PER CREDIT

Methodology: Thanh T. Biet (Equal), Hong-Keun Park (Equal), Dongjin Park (Equal). Formal Analysis: Thanh T. Biet (Equal), Su-Jin Park (Equal). Writing – original draft: Thanh T. Biet (Equal), Hong-Keun Park (Equal). Writing – review & editing: Thanh T. Biet (Equal), Hong-Keun Park (Equal), Dongjin Park (Equal), Youn-Hee Choi (Equal). Investigation: Su-Jin Park (Equal). Resources: Su-Jin Park (Lead). Conceptualization: Youn-Hee Choi (Lead). Funding acquisition: Youn-Hee Choi (Lead). Supervision: Youn-Hee Choi (Equal).

Submitted: July 01, 2023 CST. Accepted: August 30, 2023 CST.

Published: September 08, 2023 CST.

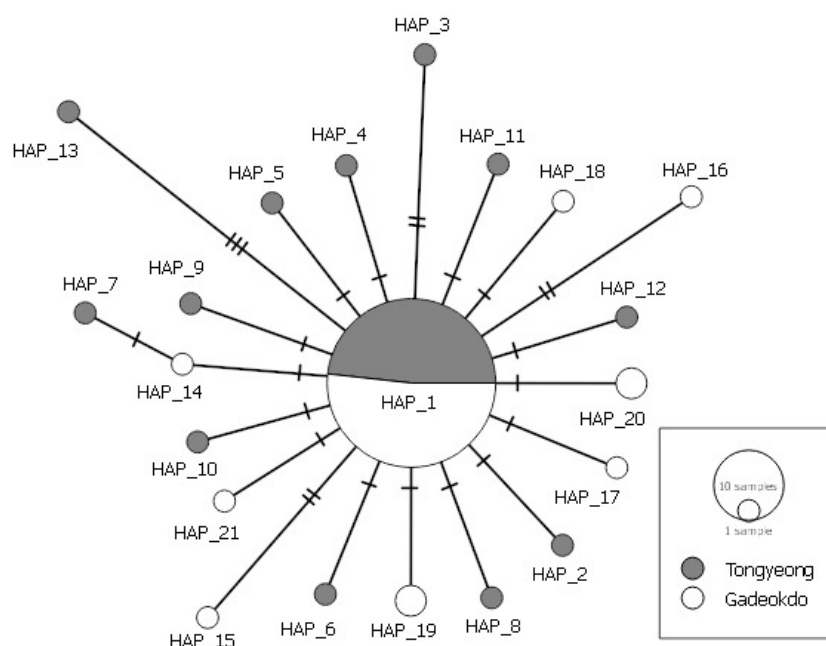


Figure 3. Haplotype network of mtCO1 of *C. gigas* populations from TY and GD. Each circle corresponds to a unique haplotype sized in proportion to its frequency. The hash marks on the lines indicate the number of substitutions that separate haplotypes.

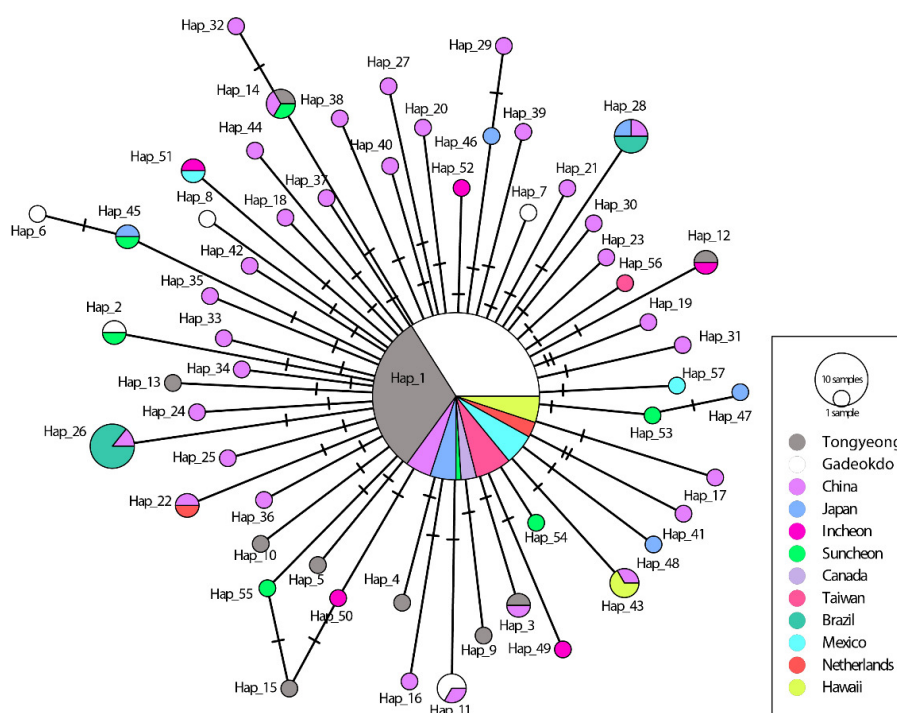


Figure 4. Haplotype network of mtCOI of 12 *C. gigas* populations, including TY and GD. Each of the different colors represents a geographic sampling site. Each circle corresponds to a unique haplotype sized in proportion to its frequency. The hash marks on the lines indicate the number of substitutions that separate haplotypes.



This is an open-access article distributed under the terms of the Creative Commons Attribution 4.0 International License (CCBY-4.0). View this license's legal deed at <http://creativecommons.org/licenses/by/4.0> and legal code at <http://creativecommons.org/licenses/by/4.0/legalcode> for more information.

REFERENCES

1. Ruesink JL, Lenihan HS, Trimble AC, et al. Introduction of non-native oysters: Ecosystem effects and restoration implications. *Annu Rev Ecol Evol Syst.* 2005;36(1):643-689. doi:[10.1146/annurev.ecolsys.36.102003.152638](https://doi.org/10.1146/annurev.ecolsys.36.102003.152638)
2. Choi KS. Oyster capture-based aquaculture in the Republic of Korea. In: Lovatelli A, Holthus PF, eds. *Capture-Based Aquaculture. Global Overview.* FAO Fisheries Technical Paper. No. 508. FAO; 2008:271-286.
3. NIFS (National Institute of Fisheries Science). Mass cultivation of Pacific oyster (*Crassostrea gigas*) in south sea of Korea. National Institute of Fisheries Science, South Korea. 2020. Accessed December 2021. <https://www.nifs.go.kr/rsh/index.jsp?type=1>
4. Cho CH. Present status and prospects of oyster industry in Korea. *J Aquac.* 1996;9(4):303-309.
5. NGII (National Geographic Information Institute). Ministry of Land, Infrastructure and Transport, The National Atlas of Korea: Comprehensive Edition. South Korea; 2017.
6. Lee CH, Lee JH, Sung CG, et al. Monitoring toxicity of polycyclic aromatic hydrocarbons in intertidal sediments for five years after the Hebei Spirit oil spill in Taean, Republic of Korea. *Mar Pollut Bull.* 2013;76(1-2):241-249. doi:[10.1016/j.marpolbul.2013.08.033](https://doi.org/10.1016/j.marpolbul.2013.08.033)
7. Lim HJ, Back SH, Lim MS, Choi EH, Kim SK. Regional variations in Pacific oyster, *Crassostrea gigas* growth and the number of larvae occurrence and spat settlement along the West Coast, Korea. *Korean J Malacol.* 2012;28(3):259-267. doi:[10.9710/kjm.2012.28.3.259](https://doi.org/10.9710/kjm.2012.28.3.259)
8. Avise JC, Arnold J, Ball RM, et al. Intraspecific phylogeography: the mitochondrial DNA bridge between population genetics and systematics. *Annu Rev Ecol Syst.* 1987;18(1):489-522. doi:[10.1146/annurev.es.18.110187.002421](https://doi.org/10.1146/annurev.es.18.110187.002421)
9. Brown WM. The mitochondrial genome of animals. In: MacIntyre RJ, ed. *Molecular Evolutionary Genetics.* Plenum Press; 1985:95-130. doi:[10.1007/978-1-4684-4988-4_2](https://doi.org/10.1007/978-1-4684-4988-4_2)
10. Nagashima K, Sato M, Kawamata K, Nakamura A, Ohta T. Genetic structure of Japanese scallop population in Hokkaido, analyzed by mitochondrial haplotype distribution. *Mar Biotech.* 2005;7(1):1-10. doi:[10.1007/s10126-004-3046-9](https://doi.org/10.1007/s10126-004-3046-9)
11. Zhan A, Perepelizin PV, Ghabooli S, et al. Scale-dependent post-establishment spread and genetic diversity in an invading mollusc in South America. *Divers Distrib.* 2012;18(10):1042-1055. doi:[10.1111/j.1472-4642.2012.00894.x](https://doi.org/10.1111/j.1472-4642.2012.00894.x)
12. Zheng JH, Nie HT, Yang F, Yan XW. Genetic variation and population structure of different geographical populations of *Meretrix petechialis* based on mitochondrial gene COI. *J Genet.* 2019;98(3):1-9. doi:[10.1007/s12041-019-1111-4](https://doi.org/10.1007/s12041-019-1111-4)
13. Cho ES, Jeong HD. The population genetic structure of the oyster *Crassostrea gigas* (Bivalvia: Ostreidae) from Gamak Bay in Korea. *J Life Sci.* 2008;18(7):1015-1018. doi:[10.5352/ILS.2008.18.7.1015](https://doi.org/10.5352/ILS.2008.18.7.1015)
14. An HS, Lee JW, Kim WJ, et al. Comparative genetic diversity of wild and hatchery-produced Pacific oyster (*Crassostrea gigas*) populations in Korea using multiplex PCR assays with nine polymorphic microsatellite markers. *Genes Genom.* 2013;35(6):805-815. doi:[10.1007/s13258-013-0140-2](https://doi.org/10.1007/s13258-013-0140-2)
15. Hyun JH, Kim SH, Mok JS, et al. Impacts of long-line aquaculture of Pacific oysters (*Crassostrea gigas*) on sulfate reduction and diffusive nutrient flux in the coastal sediments of Jinhae-Tongyeong, Korea. *Mar Pollut Bull.* 2013;74(1):187-198. doi:[10.1016/j.marpolbul.2013.07.004](https://doi.org/10.1016/j.marpolbul.2013.07.004)
16. MOF (Ministry of Ocean and Fisheries). Fisheries Information Service, Ministry of Ocean and Fisheries: Gwacheon, Korea. South Korea. 2021. Accessed December 2021. <https://www.mof.go.kr/statPortal/main/portalMain.do>
17. Asahida T, Kobayashi T, Saitoh K, Nakayama I. Tissue preservation and total DNA extraction from fish stored at ambient temperature using buffers containing high concentration of urea. *Fisheries science.* 1996;62(5):727-730. doi:[10.2331/fishsci.62.727](https://doi.org/10.2331/fishsci.62.727)
18. Hall T. BioEdit: a user-friendly biological sequence alignment editor and analysis program for Windows 95/98/NT. *Nucleic Acids Symp Ser.* 1999;41:95-98.
19. Stothard P. The sequence manipulation suite: JavaScript programs for analyzing and formatting protein and DNA sequences. *Biotech.* 2000;28(6):1102-1104. doi:[10.2144/00286ir01](https://doi.org/10.2144/00286ir01)

20. Li S, Li Q, Yu H, Kong L, Liu S. Genetic variation and population structure of the Pacific oyster *Crassostrea gigas* in the northwestern Pacific inferred from mitochondrial COI sequences. *Fish Sci.* 2015;81(6):1071-1082. doi:[10.1007/s12562-015-0928-x](https://doi.org/10.1007/s12562-015-0928-x)
21. Hong JS, Sekino M, Sato S. Molecular species diagnosis confirmed the occurrence of Kumamoto oyster *Crassostrea sikamea* in Korean waters. *Fish Sci.* 2012;78(2):259-267. doi:[10.1007/s12562-011-0453-5](https://doi.org/10.1007/s12562-011-0453-5)
22. Sekino M, Sato S, Hong JS, Li Q. Contrasting pattern of mitochondrial population diversity between an estuarine bivalve, the Kumamoto oyster *Crassostrea sikamea*, and the closely related Pacific oyster *C. gigas*. *Mar Biol.* 2012;159(12):2757-2776. doi:[10.1007/s00227-012-2037-z](https://doi.org/10.1007/s00227-012-2037-z)
23. Layton KKS, Martel AL, Hebert PDN. Patterns of DNA barcode variation in Canadian marine molluscs. *PLoS ONE.* 2014;9(4):e95003. doi:[10.1371/journal.pone.0095003](https://doi.org/10.1371/journal.pone.0095003). PMID:24743320
24. Hsiao ST, Chuang SC, Chen KS, Ho PH, Wu CL, Chen CA. DNA barcoding reveals that the common cupped oyster in Taiwan is the Portuguese oyster *Crassostrea angulata* (Ostreoida; Ostreidae), not *C. gigas*. *Sci Rep.* 2016;6(1):34057.
25. Moreira A, Figueira E, Pecora IL, Soares AM, Freitas R. Biochemical alterations in native and exotic oyster species in Brazil in response to increasing temperature. *Comp Biochem Physiol C Toxicol Pharmacol.* 2016;191:183-193. doi:[10.1016/j.cbpc.2016.10.008](https://doi.org/10.1016/j.cbpc.2016.10.008)
26. Raith M. *Phylogeny and species diversity of Gulf of California oysters (Ostreidae) inferred from mitochondrial DNA*. California State University, Fullerton
27. Sutton JT, Nishimoto J, Schrader J, et al. Genetic analysis identifies the *Ostrea stentina/aupouria/equestris* oyster species complex in Hawai'i, and resolves its lineage as the western Pacific *O. equestris*. 2020;2020(03). doi:[10.1101/2020.03.22.002444](https://doi.org/10.1101/2020.03.22.002444)
28. Rozas J, Ferrer-Mata A, Sánchez-DelBarrio JC, et al. DnaSP 6: DNA sequence polymorphism analysis of large data sets. *Mol Biol Evol.* 2017;34(12):3299-3302. doi:[10.1093/molbev/msx248](https://doi.org/10.1093/molbev/msx248)
29. Excoffier L, Lischer HEL. Arlequin suite ver 3.5: a new series of programs to perform population genetics analyses under Linux and Windows. *Mol Ecol Res.* 2010;10(3):564-567. doi:[10.1111/j.1755-0998.2010.02847.x](https://doi.org/10.1111/j.1755-0998.2010.02847.x)
30. Clement M, Snell Q, Walke P, Posada D, Crandall K. TCS: estimating gene genealogies. *Parallel Distrib Process Symp Int.* 2002;3:0184-0184. doi:[10.1109/ipdps.2002.1016585](https://doi.org/10.1109/ipdps.2002.1016585)
31. Leigh JW, Bryant D. POPART: full-feature software for haplotype network construction. *Methods Ecol Evol.* 2015;6(9):1110-1116. doi:[10.1111/2041-210x.12410](https://doi.org/10.1111/2041-210x.12410)
32. Bird KA, An H, Gazave E, et al. Population Structure and Phylogenetic Relationships in a Diverse Panel of *Brassica rapa* L. *Front Plant Sci.* 2017;8(321). doi:[10.3389/fpls.2017.00321](https://doi.org/10.3389/fpls.2017.00321). PMID:28348571